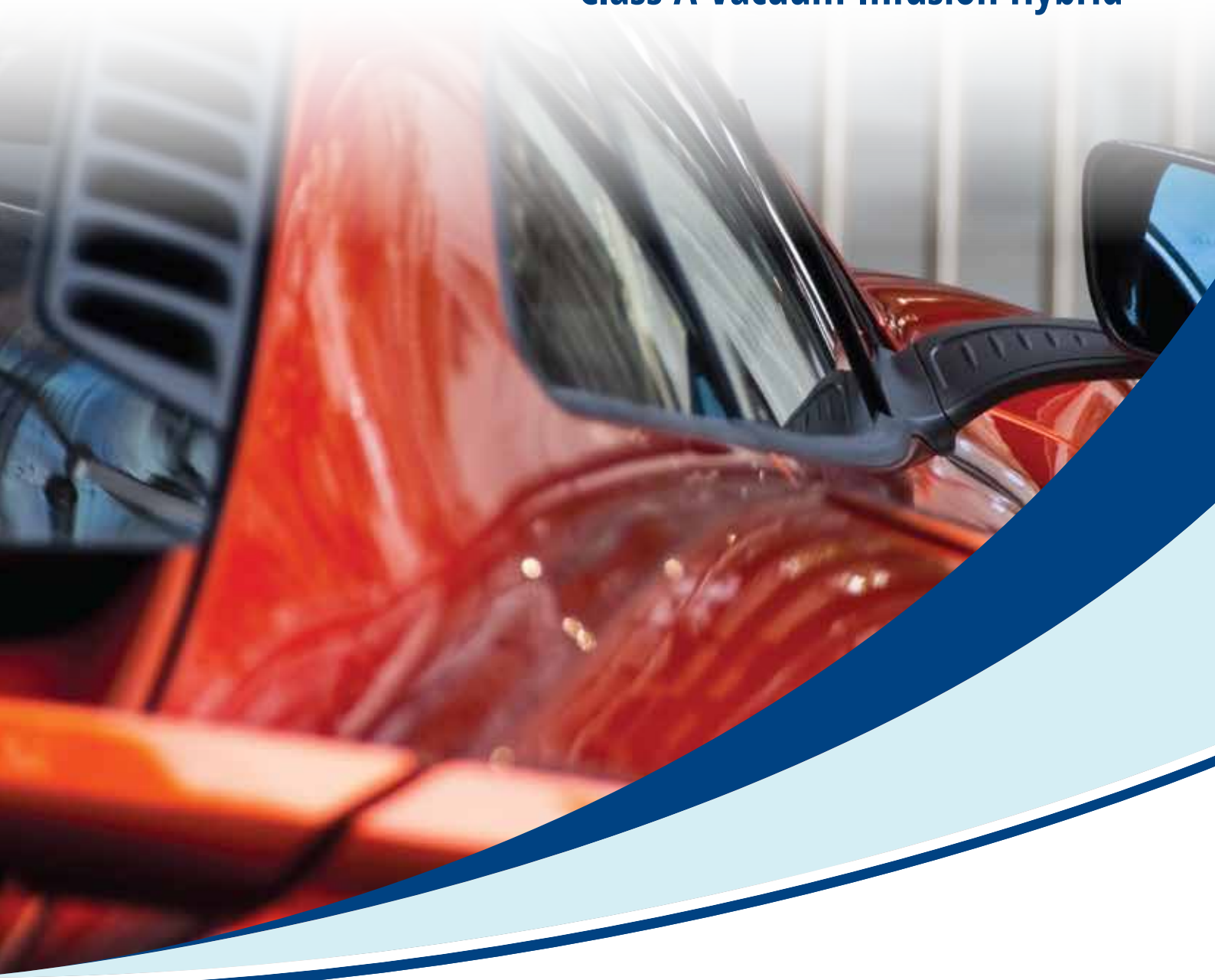




POLYLITE® 31515-SERIES

Class A Vacuum Infusion Hybrid



- Produce a Class A Surface appearance almost as smooth as glass
- High quality mould surface
- Low viscosity
- Options to fill for further improved surface quality

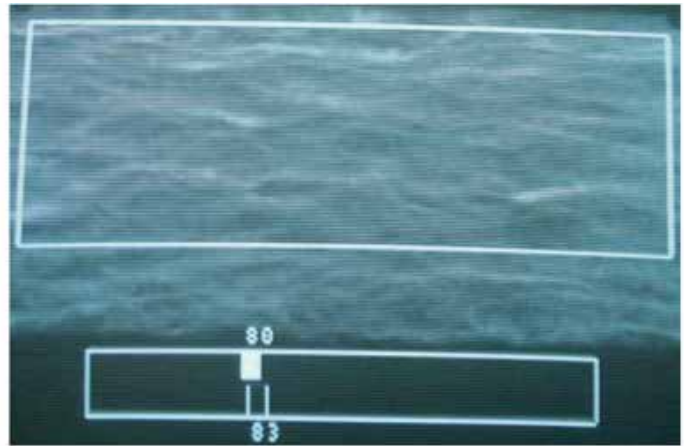
Produce a Class A Surface appearance almost as smooth as glass.

- Ease of use - only one resin component to use.
- Excellent mould surface reproduction.
- Surface quality comparable to Sheet Molding Compound (SMC) or polished steel.
- Excellent dimensional stability.
- High heat distortion temperature (HDT) when filled with Alumina trihydrate.

Standard infusion resin



Polylite® 31515-08



Surface wave scan snapshots of gelcoated laminate surfaces made reinforced with a standard infusion resin and Polylite® 31515-08



Available variants:

- Polylite® 31515-07 for unfilled applications(near Class A finish).
- Polylite® 31515-08 designed for filled applications (superior Class A finish) employing alumina trihydrate.

The information herein is to assist customers in determining whether our products are suitable for their applications. Our products are intended for sale to industrial and commercial customers. We request that customers inspect and test our products before use and satisfy themselves as to contents and suitability. Nothing herein shall constitute any other warranty expressed or implied, including any warranty of merchantability or fitness, nor is protection from any law or patent to be inferred. All patent rights are reserved. The exclusive remedy for all proven claims is replacement of our materials, and in no event shall we be liable for special, incidental, or consequential damages. Our standard conditions of contract will apply to all sales

NCS Resins South Africa: 9 Pineside road, Pinetown, Kwazulu Natal, South Africa
Durban (Head office) Tel: +27 (0)31 713 0600 | info@ncsresins.com

Polylite® is a registered trademark of Reichhold Inc.

REICHHOLD